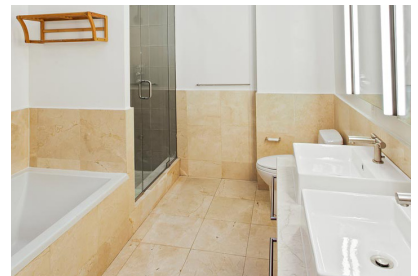
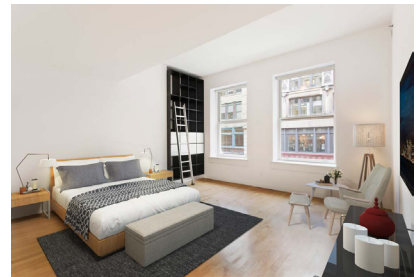


Large 3-bedroom loft at the Bullmoose Condominium

42 East 20th Street, Apt. 2A



Large 3-bedroom loft at the Bullmoose Condominium. Soaring ceilings, huge north-facing windows. Beautiful details and finishes throughout this impeccable apartment. Huge master suite with outfitted walk-in closet and generous master bath with separate 6' soaking tub and walk-in steam shower. Second and third bedrooms each have a walk-in closet as well. Second full bath plus powder room. Large living/dining room and open Poggenpohl kitchen with 2" thick marble counters and marble backsplashes, SubZero fridge and wine refrigerator, Viking oven and gas cooktop, Bosch dishwasher, built-in microwave and garbage disposal. Washer dryer in separate laundry closet. Gracious entry foyer with large closet. Maple floors throughout. Solid core wood doors. HVAC, video intercom, CAT-5 wiring. *An assessment of \$2,145/month will expire in November 2016*

Asking:	\$3,695,000
Common Charges / R.E. Taxes:	\$1,318 / \$2,304
Bedrooms / Bathrooms:	3 / 2.5
Square Footage:	2,256 ft ²
Neighborhood:	Gramercy

Building Features:

The Bullmoose, an 1898 Beaux Arts building converted in 2003, is a boutique condominium with 22 units. The rooftop deck is equipped with outdoor furniture, a grill for residents' use, and greenery. It is a pet-friendly building with a superintendent/porter on site seven days a week.



Fran Shapiro

Lic. Real Estate Salesperson

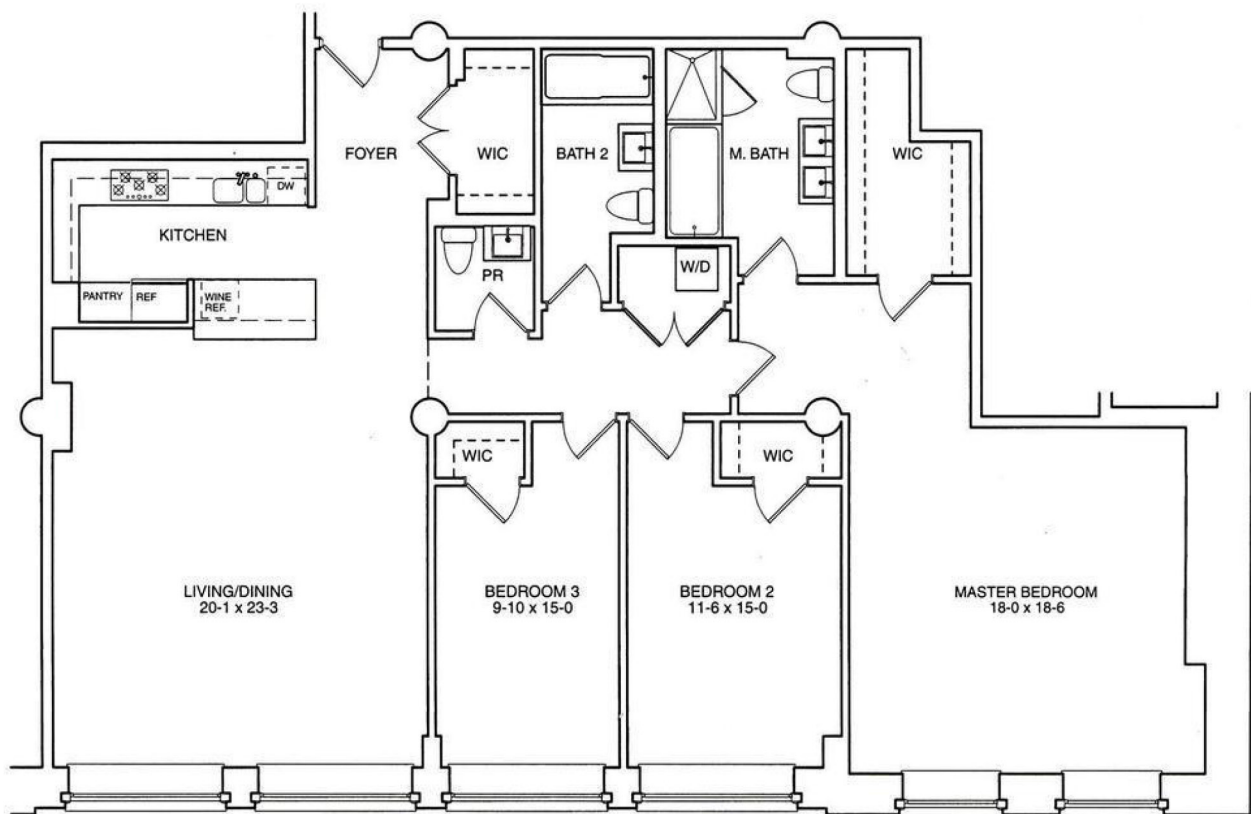
Mobile: 347-556-4409

Email: fran@mercedesberk.com

ENGEL & VÖLKERS
MERCEDES / BERK

Large 3-bedroom loft at the Bullmoose Condominium

42 East 20th Street, Apt. 2A



Fran Shapiro

Lic. Real Estate Salesperson

Mobile: 347-556-4409

Email: fran@mercedesberk.com

ENGEL & VÖLKERS[®]
MERCEDES / BERK