

On the Terrace at 15 Central Park West

15 Central Park West, 2E



Beautiful two bedroom with large, private terrace in the House at 15 CPW. This immaculate apartment features a corner living room bathed in sunlight, and accessed through a generous foyer and gallery. The open, eat-in kitchen is outfitted with appliances by SubZero, Wolf and KitchenAid. Each of the large bedrooms has a luxuriously appointed en suite marble bath. French doors in the master bedroom lead to a large terrace, one of only a very few in the House. The apartment also has a powder room, ample closets, and a commercial washer/dryer.

Designed by renowned architect Robert A.M. Stern, Fifteen Central Park West is one of only a few limestone buildings to join the city skyline in a hundred years. Fifteen Central Park West presents a distinguished level of residents-only service, space and privacy.

Listing Price:	\$7,800,000
Common Charges / R.E. Taxes:	\$4,257 / \$2,654
Square Footage:	2,021 sq. ft.
Exterior Square Footage:	358 sq. ft.
Bedrooms / Bathrooms:	2 / 2.5

Building Features:

- Fitness Center with 75' Lap Pool
- Private Restaurant for residents
- Children's Playroom
- Media Room



Elizabeth Mercedes Berk

Principal

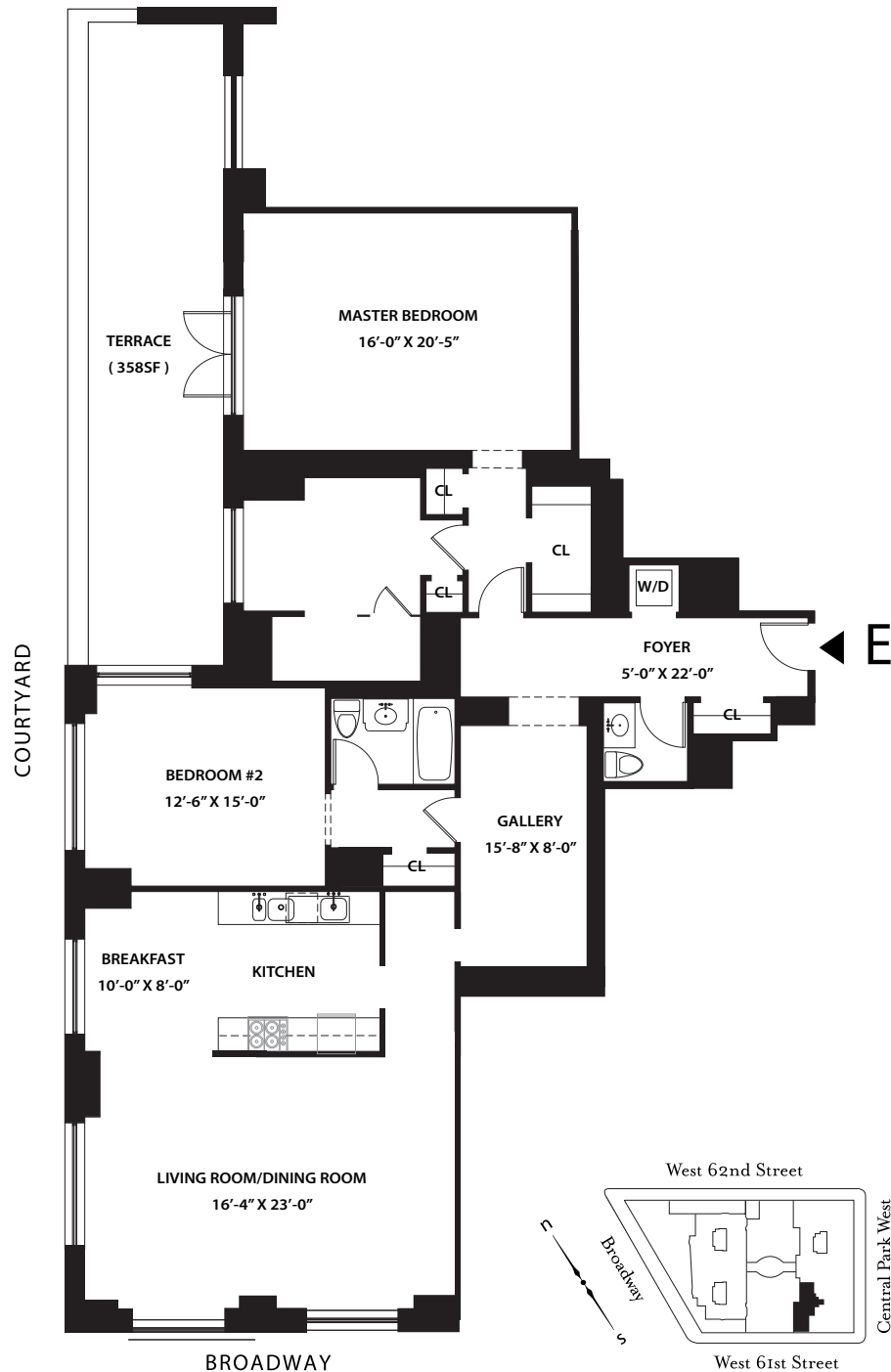
Mobile: 917-371-0075 * Office: 212-452-3070

Email: liz@mercedesberk.com

ENGEL & VÖLKERS
MERCEDES / BERK

On the Terrace at 15 Central Park West

15 Central Park West, 2E



Elizabeth Mercedes Berk

Principal

Mobile: 917-371-0075 * Office: 212-452-3070

Email: liz@mercedesberk.com

ENGEL & VÖLKERS
MERCEDES / BERK