

## Bright studio in full-service Manhattan House Condominium 200 East 66th Street #A904



Bright studio in full-service Manhattan House Condominium. Windowed kitchen with all stainless steel, top-of-the-line, Sub Zero and Viking appliances and double frosted glass doors to close it off. Separate dressing area with great closets and custom built-ins leading to luxury bathroom. Lots of light with nice views facing West. Other Features Include: Abundant closets, washer/dryer and hardwood floors.

The Manhattan House at 200 East 66th Street originally designed by renowned architect Gordon Bunshaft of Skidmore, Owings & Merrill, famed designers of Lever House on Park Avenue. New luxurious services and amenities include: 24-hour door/porter staff, full-time residence manager, expansive lush gardens, spacious terraces, new 10,000 sf rooftop with clubroom, gym and Exhale Spa facilities, valet parking and five star hotel concierge service.

<b>Rent:</b>	\$3,200 / mo.
<b>Approx. Sq. Ft.:</b>	556 ft <sup>2</sup>
<b>Bedrooms / Bathrooms:</b>	Studio / 1
<b>Type:</b>	Condo
<b>Neighborhood:</b>	Upper East Side

### Building Features:

- Bike Room
- Children's Playroom
- Cold Storage
- Concierge
- Garage Parking



### Sarah Gabbay

Licensed Real Estate Salesperson

Mobile: 732-245-9776 \* Office: 646-661-2068

Email: sarahg@mercedesberk.com

**ENGEL & VÖLKERS**  
**MERCEDES / BERK**

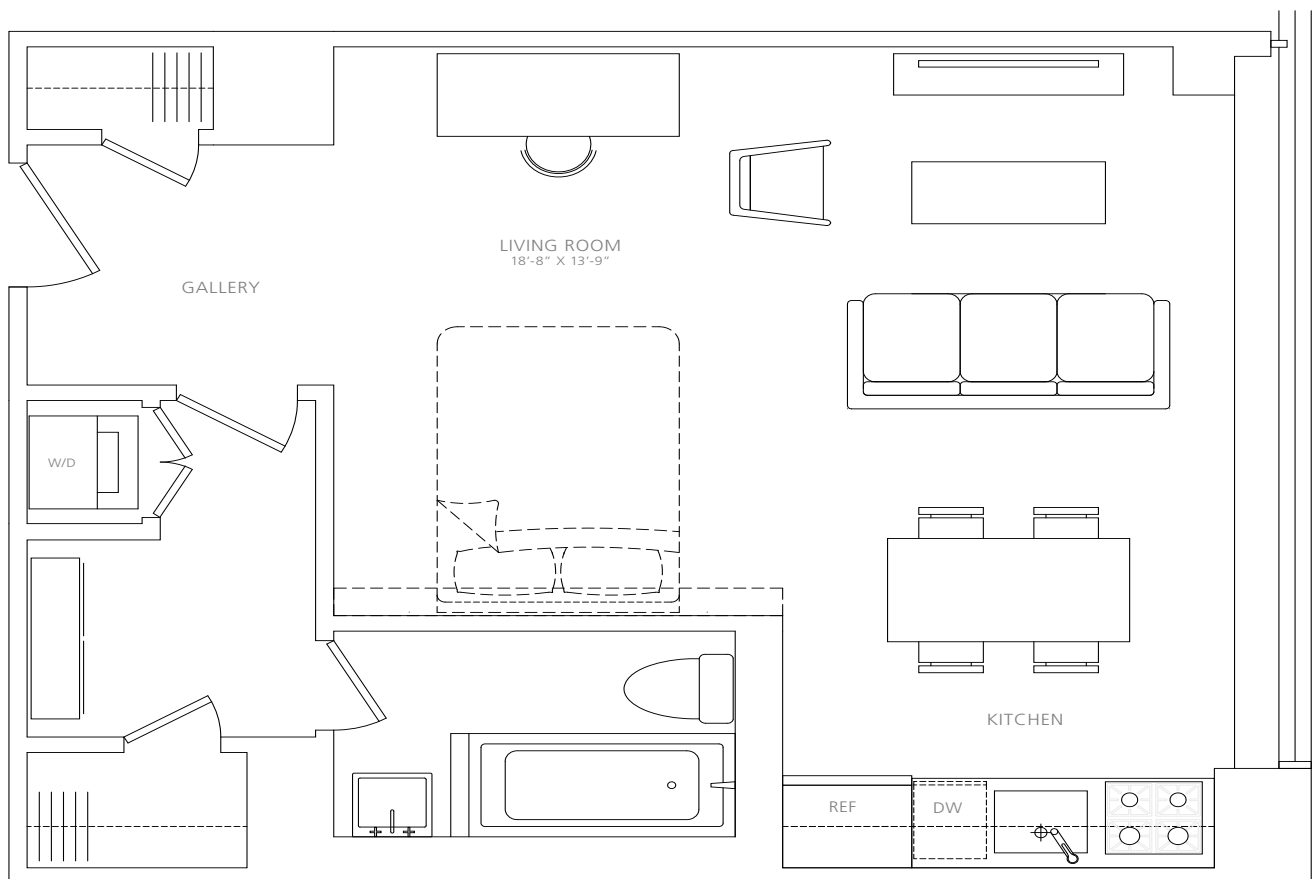
**Bright studio in full-service Manhattan House Condominium**  
**200 East 66th Street #A904**

---

MANHATTAN HOUSE



200 E 66ST



**Sarah Gabbay**

Licensed Real Estate Salesperson

Mobile: 732-245-9776 \* Office: 646-661-2068

Email: sarahg@mercedesberk.com

**ENGEL & VÖLKERS**  
**MERCEDES / BERK**