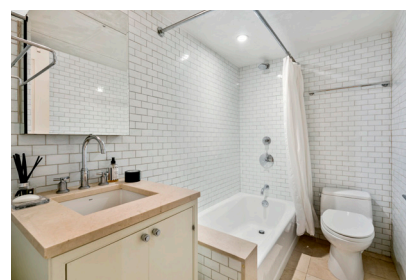
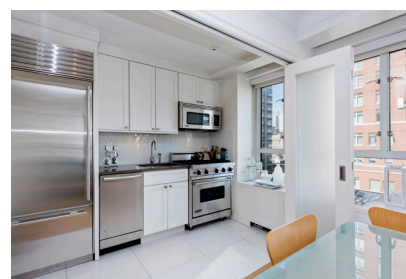


Bright studio in full-service Manhattan House Condominium 200 East 66th Street #A904



Bright studio in full-service Manhattan House Condominium. Windowed kitchen with all stainless steel, top-of-the-line, Sub Zero and Viking appliances and double frosted glass doors to close it off. Separate dressing area with great closets and custom built-ins leading to luxury bathroom. Lots of light with nice views facing West. Other Features Include: Abundant closets, washer/dryer and hardwood floors.

The Manhattan House at 200 East 66th Street originally designed by renowned architect Gordon Bunshaft of Skidmore, Owings & Merrill, famed designers of Lever House on Park Avenue. New luxurious services and amenities include: 24-hour door/porter staff, full-time residence manager, expansive lush gardens, spacious terraces, new 10,000 sf rooftop with clubroom, gym and Exhale Spa facilities, valet parking and five star hotel concierge service.

Rent: \$3,200 / mo.

Approx. Sq. Ft.: 556 ft²

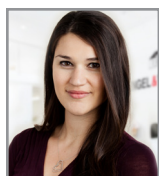
Bedrooms / Bathrooms: Studio / 1

Type: Condo

Neighborhood: Upper East Side

Building Features:

- Bike Room
- Children's Playroom
- Cold Storage
- Concierge
- Garage Parking



Sarah Gabbay

Licensed Real Estate Salesperson

Mobile: 732-245-9776 * Office: 646-661-2068

Email: sarahg@mercedesberk.com

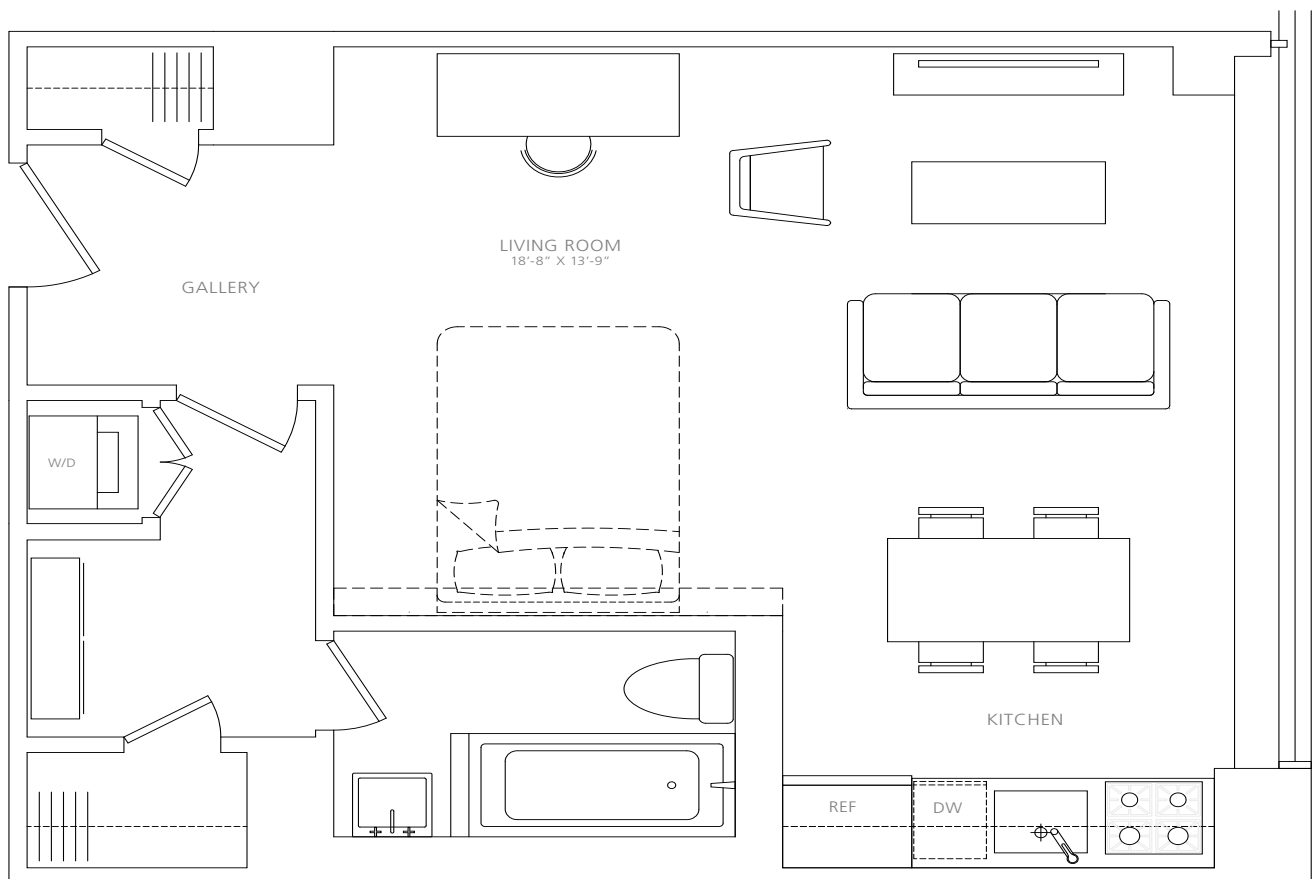
ENGEL & VÖLKERS
MERCEDES / BERK

Bright studio in full-service Manhattan House Condominium
200 East 66th Street #A904

MANHATTAN HOUSE



200 E 66ST



Sarah Gabbay

Licensed Real Estate Salesperson

Mobile: 732-245-9776 * Office: 646-661-2068

Email: sarahg@mercedesberk.com

ENGEL & VÖLKERS
MERCEDES / BERK