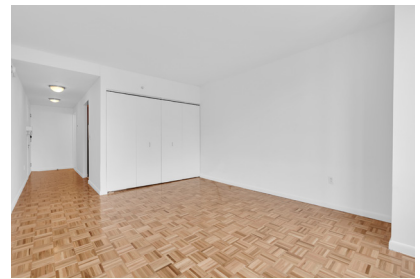


# Light-Filled Studio in the Heart of Nolita

199 Bowery, Apt. 7E



Light-filled studio in the heart of Nolita! Located where Spring Street meets the Bowery, this 7th floor studio enjoys a sunny view to the west, and puts Nolita, Soho and the Lower East Side, plus multiple Subway lines, within easy walking-distance.

The maple and granite kitchen features stainless steel appliances, while the bathroom is clad in marble and be the first to enjoy the brand new beautiful hardwood floors.

Nolita Place is a full-service building with 24-hour doorman, live-in super, central laundry, gym, and large common terrace a rare find in this vibrant neighborhood.

Sorry, no pets.

**Rent:** \$2,700 / mo.

**Approx. Sq. Ft.:** 438 ft<sup>2</sup>

**Bedrooms / Bathrooms:** Studio / 1

**Type:** Condo

**Neighborhood:** Nolita

#### Building Features:

- 24-Hour Doorman
- Live-In Super
- Central Laundry
- Gym
- Large Common Terrace



#### Jo-Di A. Moore

Lic. Real Estate Salesperson

Mobile: 917-647-8214

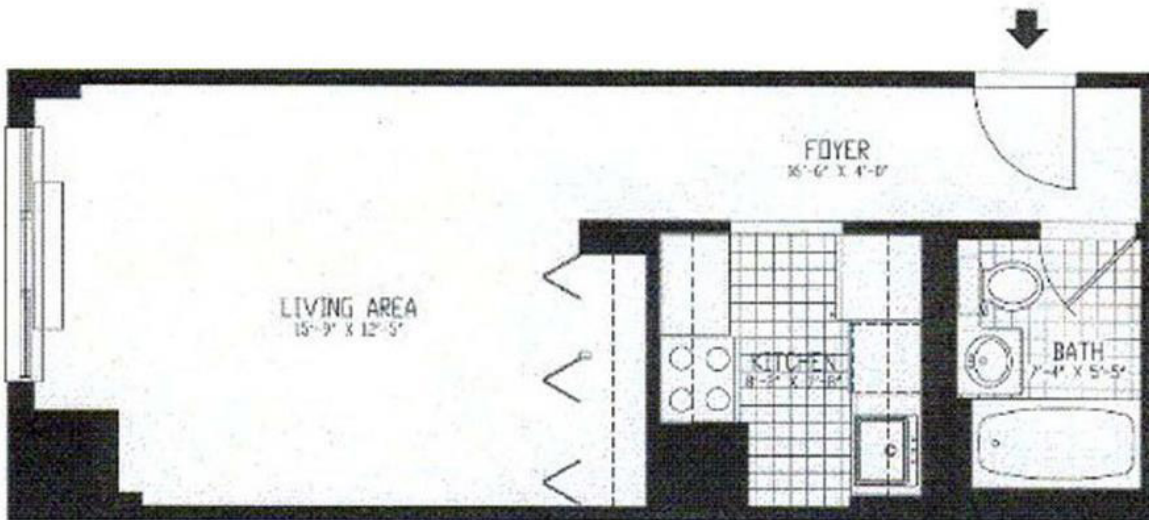
Email: jo-di@mercedesberk.com

**ENGEL & VÖLKERS**  
**MERCEDES / BERK**

# Light-Filled Studio in the Heart of Nolita

199 Bowery, Apt. 7E

---



**Jo-Di A. Moore**

Lic. Real Estate Salesperson

Mobile: 917-647-8214

Email: [jo-di@mercedesberk.com](mailto:jo-di@mercedesberk.com)

**ENGEL & VÖLKERS**<sup>®</sup>  
**MERCEDES / BERK**